

# MIXTEC

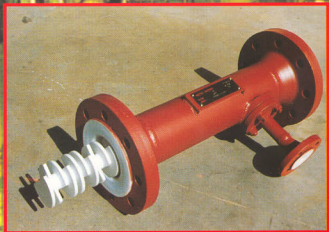
FOR MIXING TECHNOLOGY

**INSTAMIX**

**INLINE**

**STATIC**

**MIXERS**



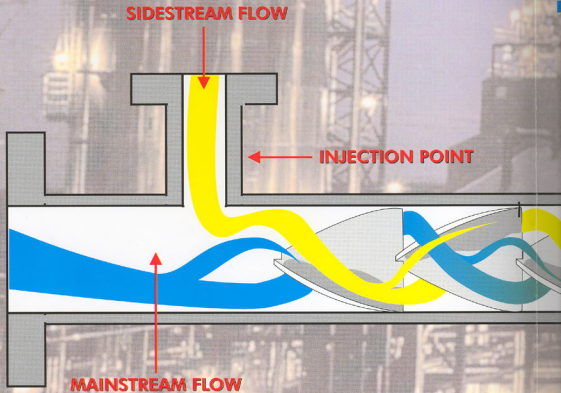
## The Advantages of Static Mixing

- An effective method of mixing various products in an efficient and reliable manner.
- Easy to install in existing pipelines, and eliminates the necessity for sealing systems other than flange gaskets.
- Low in capital, operating and maintenance costs.
- All of this adds up to energy savings, a long service life and guaranteed process results.

### Why INSTAMIX?

Most suppliers of static mixers concentrate upon mixing elements with little or no attention being paid to the injection and discharge configurations. Should the method of injection result in incorrect approach velocities to the stator elements, inadequate mixing will result. Should the incorrect position be selected for injection of the fluid which must be mixed with the main stream, then this could also result in inadequate mixing.

The MIXTEC INSTAMIX can be supplied complete with an uniquely designed injection feature, ensuring better mixing.



## Applications

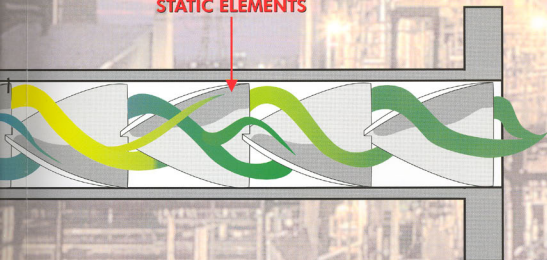
The MIXTEC INSTAMIX range of motionless mixers are ideally suited for blending, dispersing and for thermo-control of a broad spectrum of products across a wide viscosity range, in a variety of industries including chemical, petro-chemical, pulp and paper, food and water treatment. They can be used with many combinations of liquids, gasses and slurries.

## Material of Construction

The MIXTEC INSTAMIX is available in a wide range of materials including:

- CARBON STEEL
- CARBON STEEL GALVANISED OR COATED WITH RUBBER OR PLASTICS
- STAINLESS STEELS
- PVC
- POLYPROPYLENE
- PTFE
- HIGH ALLOY STEELS
- TITANIUM OR OTHER MATERIALS ON REQUEST

**STATIC ELEMENTS**



# INSTAMIX STATIC MIXER DATA SHEET

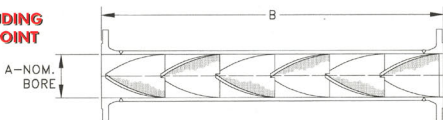
A - Nominal Bore	15	20	25	40	50	80	100	150	200	250	300
B - Length without Injection Point	150	180	200	300	400	600	750	1000	1300	1600	1900
C - Length with Injection Point	250	300	350	470	580	800	1000	1350	1700	2050	2400

All units are manufactured to international standards.

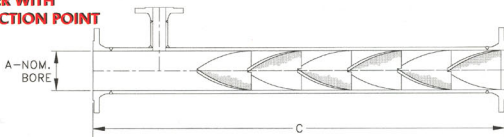
It is the policy of Mixtec to continually research and develop its products.

The dimensions shown are for reference only and should be confirmed on placement of order.

## MIXER EXCLUDING INJECTION POINT



## MIXER WITH INJECTION POINT



Standard flanges are slip on raised face type to B.S.4504 Table 10 or ANSI B 16.5 150lb. Weld neck type or alternative specifications, as well screwed or sanitary fittings can be supplied on request.

Multiple and removable injection points are also available.

**MIXTEC**  
FOR MIXING TECHNOLOGY